

**Austermann Collection Fall/Winter 2010 Pattern 8**



All rights reserved. No part may be reproduced in any form without written permission from the publisher. This includes the reproduction, translation and microfilming as well as storing and processing in electronic systems. It is also not permitted to scan, save to PC or CD, to change or manipulate images.

**Schoeller Süssen GmbH · Postfach 1160 · D-73073 Süssen ·  
Phone +49/7162-93050-15 · Fax +49/7162-430-80 · [www.austermann-wolle.de](http://www.austermann-wolle.de)**

## Pattern 8 Tunic

### Sizes

Instructions are for Woman's Size Small. Changes for sizes Medium and Large are in parentheses. If there is only one number it applies to all sizes.

Bust: 31 (35/39)"/79 (89/99) cm

Length: 31 1/2"/80 cm

### Materials – Royal from Austermann

**60 % Merino Wool, 20% Polyamid, 10% Silk, 10% Cashmere, each ball = approx 200 m/ 50 g  
8 (9/10) balls in color #24 blau (blue)**

One pair each sizes US 3 and 4 (3 and 3,5 mm) needles OR SIZE TO OBTAIN GAUGE and 1 set (5) double-pointed needles (dnp) size US 3 (3 mm) from Schoeller + Stahl

**Gauges:** 26,5 sts and 55 rows = 4 x 4"/10 x 10 cm over Brioché st using size US 4 (3,5 mm) needles; 25 sts and 33 rows = 4 x 4"/10 x 10 cm over Chart pat using size US 4 (3,5 mm) needles; 22 sts and 50 rows = 4 x 4"/10 x 10 cm over garter st (K every row) using size US 4 (3,5 mm) needles. TAKE TIME TO CHECK GAUGES.

### Brioché st

**Row 1 (RS):** 1 selvage st, \*K1, P1; rep from \*, end K1, 1 selvage st.

**Row 2 (WS):** 1 selvage st, \*slip 1 st purlwise, yo, K1; rep from \*, end slip 1 st purlwise, yo, 1 selvage st.

**Row 3:** 1 selvage st, \*K the yo and slipped st tog, P1; rep from \*, end K the yo and slipped st tog, 1 selvage st.

Rep Rows 2 and 3 for Brioché st.

### Chart Pat: (multiple of 6 sts + 2)

Only the odd-numbered (RS) rows are shown. Unless stated in the Stitch Key, work the even-numbered (WS) rows as K the knit sts and P the purl sts. Rep rows 1 – 8 for chart pat.

### Full-Fashioned Decreases:

At RH side: 1 selvage st, SKP, work to last 3 sts, at LH side: K2tog, 1 selvage st.

### Instructions:

#### Back:

With size US 4 (3,5 mm) needles, cast on 139 (151/163) sts and work in Brioché rib for 6 1/4"/16 cm, dec 23 sts evenly spaced across last WS row = 116 (128/140) sts. Work in chart pat for 6 1/2"/17 cm, working the 6-st rep 19 (21/23) times and dec 30 sts evenly spaced across last WS row = 86 (98/110) sts. Work in garter st for 3 1/2"/9 cm, inc 12 sts evenly spaced across last WS row = 98 (110/122) sts. Work in chart pat, working 6-st rep 16 (18/20) times.

For the side shaping and Sleeves, work 18 (14/10) rows even, then inc 1 st each side on next row and every 6<sup>th</sup> row once more, every 4th row 3 times and every 2nd row 7 times, cast on 2 sts at beg of next 4 rows and 4 sts at beg of next 4 rows = 146 (158/170) sts. For the Sleeves work 6 1/4 (6 1/2 / 7) "/16 (17/18) cm even.

For Shoulder shaping, when piece measures 30 1/2"/77 cm from beg, bind off 5 (6/7) sts at beg of next 8 rows and 6 (7/8) sts at beg of next 4 rows,

AT THE SAME TIME, when piece measures 30 3/4"/78 cm from beg, work neck shaping as foll: bind off center 40 sts and working both sides at once, bind off from each neck edge 2 sts 2 times and 1 st once. When piece measures 31 1/2"/80 cm from beg, bind off rem 16 sts each side.

All rights reserved. No part may be reproduced in any form without written permission from the publisher. This includes the reproduction, translation and microfilming as well as storing and processing in electronic systems. It is also not permitted to scan, save to PC or CD, to change or manipulate images.

**Front:**

Work same as Back until piece measures 21 1/4"/54 cm from beg.

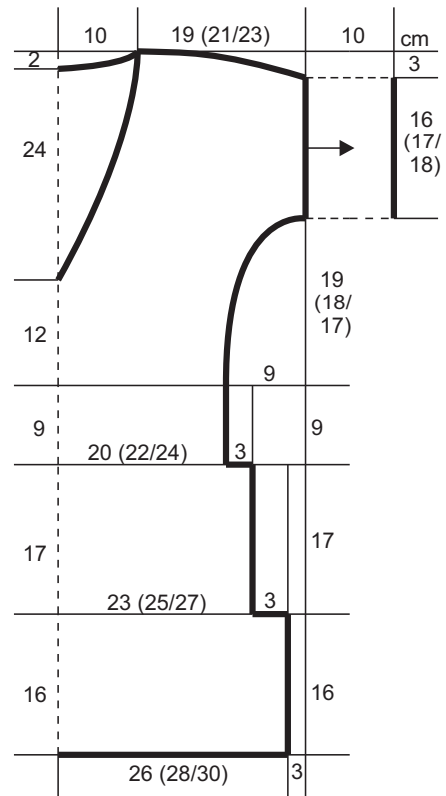
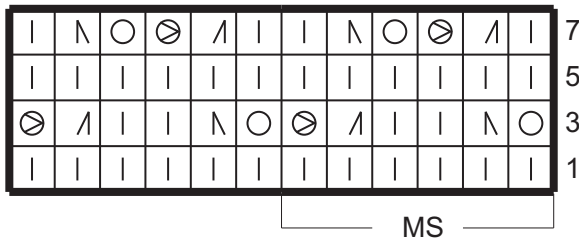
V-Neck shaping: Divide work in half and working both sides at once, work Full-Fashioned dec at each neck edge every 2nd row 9 times and every 4th row 16 times. When piece measures 30 1/2"/77 cm from beg, shape shoulder same as Back. When piece measures 31 1/2"/80 cm from beg, bind off rem 16 sts each side.

**Finishing:**

Block pieces to measurements. Sew one shoulder seam.

**Neckband:** With RS facing and circular needle, pick up and K191 sts evenly around neck edge (67 sts along each front neck and 57 sts along back neck). Work in K2, P2 rib, so that P2 falls at the center front. Work a double dec (slip 2 sts, K1, pass 2 slipped sts over K1) at center of front neck every 2nd row until band measures 1 1/2"/4 cm. Bind off sts in rib. Sew 2<sup>nd</sup> shoulder and neckband seam. Sew side and sleeve seams.

**Sleeve bands:** With RS facing and dpn, pick up and K 92 sts evenly spaced along lower edge of sleeve. Divide sts evenly over 4 needles (23 sts on each needle). Join and work in K2, P2 rib for 4"/10 cm. Bind off sts in rib.



	= 1 knit stitch (k on RS, p on WS)
○	= 1 yarn over, p on WS
⊗	= 1 yarn over, P tbl on WS
∧	= K2 sts together
∩	= SKP (sl 1, K2, pass slip stitch over K1)
┌ MS ─┘	= Repeat (MS)

All rights reserved. No part may be reproduced in any form without written permission from the publisher. This includes the reproduction, translation and microfilming as well as storing and processing in electronic systems. It is also not permitted to scan, save to PC or CD, to change or manipulate images.