

**Austermann Collection Fall/Winter 2010 Pattern 31**



All rights reserved. No part may be reproduced in any form without written permission from the publisher. This includes the reproduction, translation and microfilming as well as storing and processing in electronic systems. It is also not permitted to scan, save to PC or CD, to change or manipulate images.

**Schoeller Süssen GmbH · Postfach 1160 · D-73073 Süssen ·  
Phone +49/7162-93050-15 · Fax +49/7162-430-80 · [www.austermann-wolle.de](http://www.austermann-wolle.de)**

## 31 Wrap

**Finished Measurements:** approx 26 1/2 x 75"/67 x 190 cm

### Materials – Kid Silk from Austermann

**75% Kid Mohair, 25% Silk, each ball = approx 225 m/ 25 g**

**5 balls in color #07 grau (grey)**

One pair size US 7 (4,5 mm) from Schoeller + Stahl, OR SIZE TO OBTAIN GAUGE

Two cable needles (cn)

### Gauge

18 sts and 26 rows = 4" x 4"/10 x 10 cm over charts A, B and C using size US 7 (4,5 mm) needles.

TAKE TIME TO CHECK GAUGE.

**Notes on Charts:** Only the odd-numbered (RS) rows are shown on the charts. For rows 2, 4, & 6, and rows 168, 170 & 172 work the WS rows as knit. Work all other WS rows as purl, including the yo's. Knit the first and last st of every row for selvage sts.

### Instructions:

Cast on 107 sts and K 2 rows. Work in chart pat (see notes above), working rows 1-56 once (Chart A), then rep rows 57 – 136 (Chart B) 5 times, then work rows 137-172 (Chart C). K 2 rows then bind off all sts loosely.

### Finishing:

Weave in ends but do not cut yet. Soak in lukewarm water but do not wring. Lay flat, pulling slightly, then pin to dry. It is best to place it on a large towel on a bed. When dry, remove the pins and cut and remaining threads.

⊕ = Selvage st

| = Knit st


— = Purl st

∩ = Yarn over

λ = SKP (sl 1, k1, pass slipped st over k1)

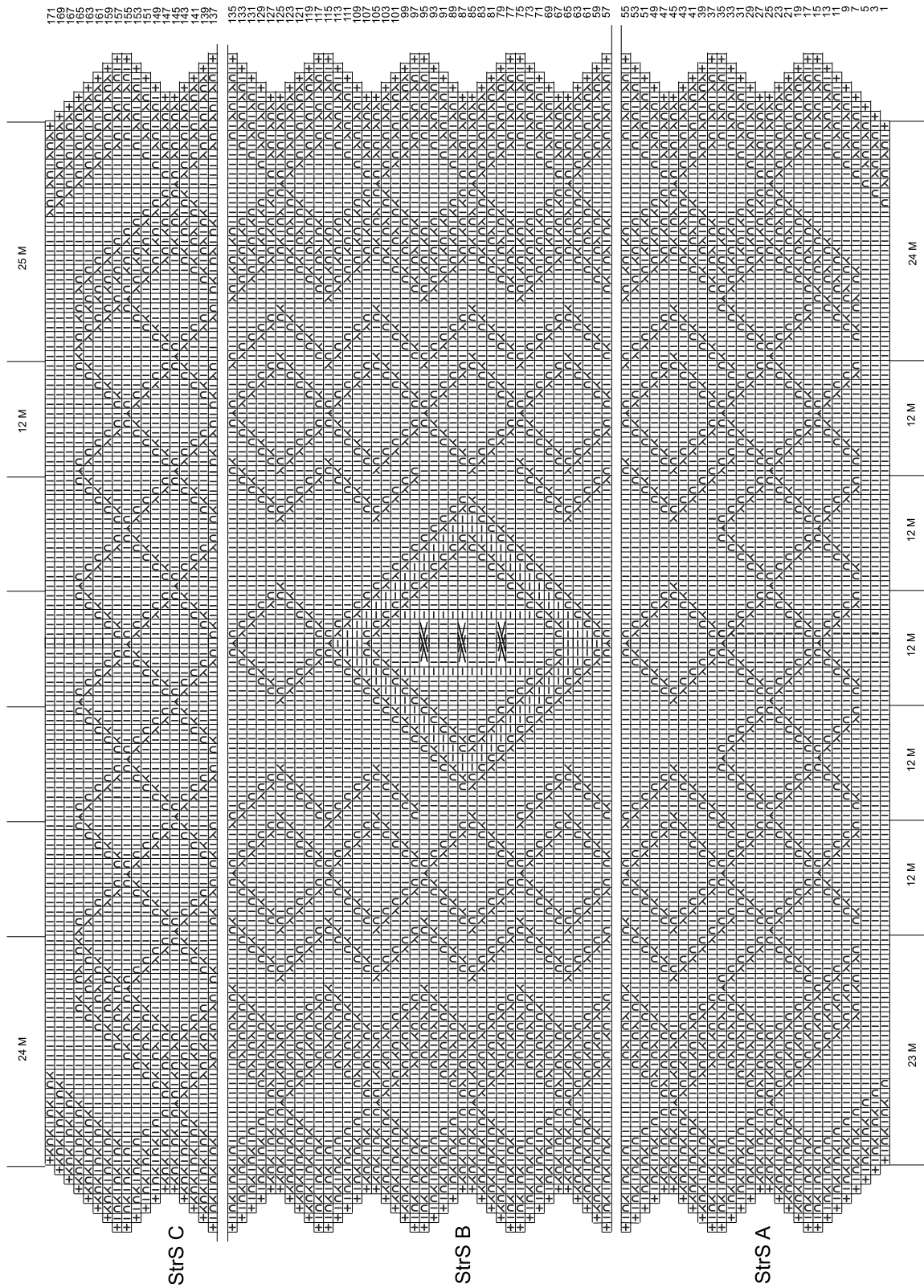
↙ = K2tog

⤴ = S2KP (sl 2 sts, k1, pass 2 slipped sts over k1)

 = Sl 2 sts to cn and hold to *back* of work, sl 1 st to a 2<sup>nd</sup> cn and hold to *front* of work, k next 2 sts, then k1 from front cn, then k2 from back cn.

StrS = Chart

All rights reserved. No part may be reproduced in any form without written permission from the publisher. This includes the reproduction, translation and microfilming as well as storing and processing in electronic systems. It is also not permitted to scan, save to PC or CD, to change or manipulate images.



All rights reserved. No part may be reproduced in any form without written permission from the publisher. This includes the reproduction, translation and microfilming as well as storing and processing in electronic systems. It is also not permitted to scan, save to PC or CD, to change or manipulate images.

Schoeller Süssen GmbH · Postfach 1160 · D-73073 Süssen ·  
 Phone +49/7162-93050-15 · Fax +49/7162-430-80 · [www.austermann-wolle.de](http://www.austermann-wolle.de)